

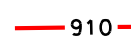

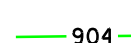

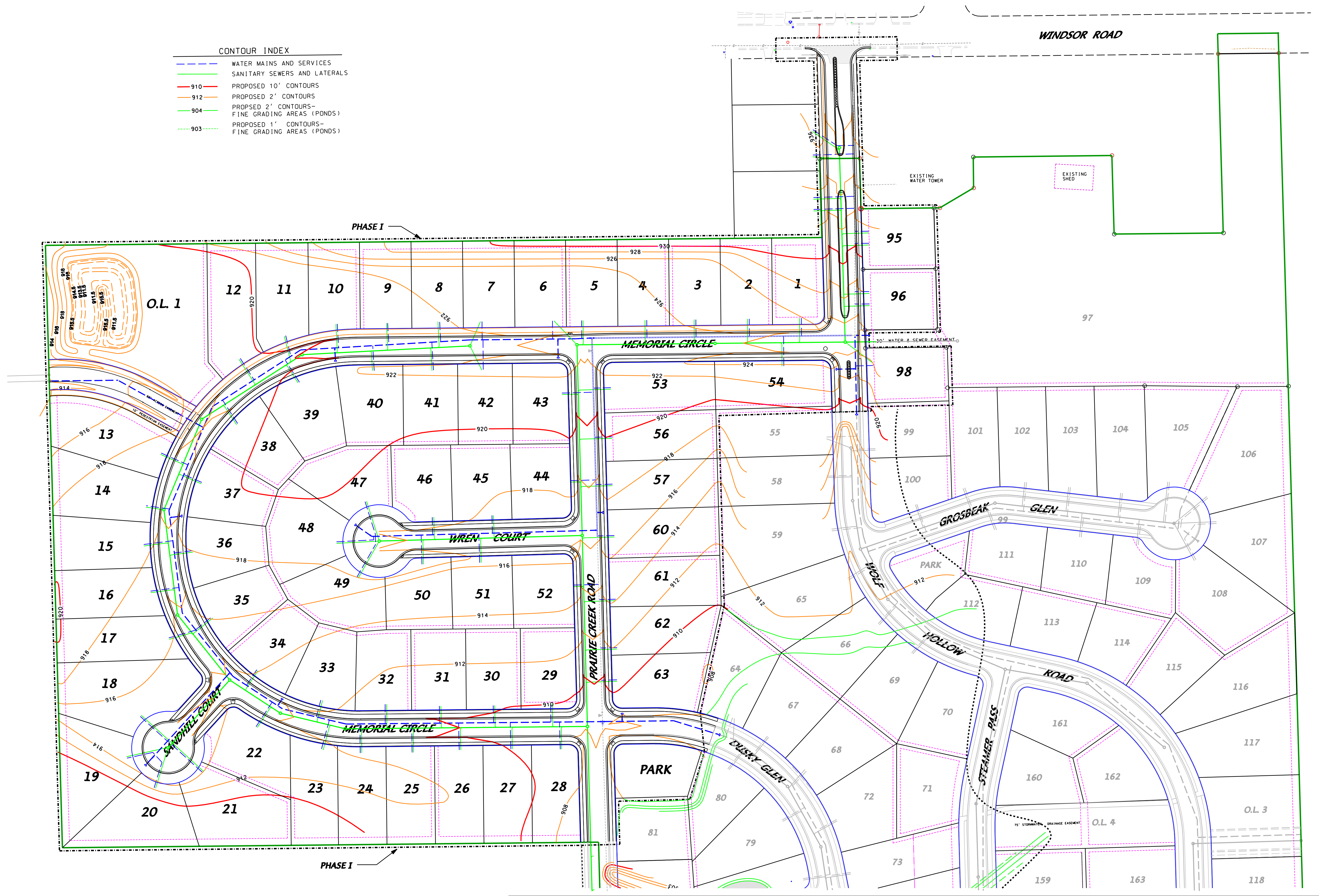
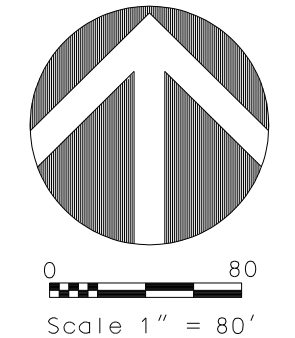



- CONTOUR INDEX**
-  WATER MAINS AND SERVICES
 -  SANITARY SEWERS AND LATERALS
 -  PROPOSED 10' CONTOURS
 -  PROPOSED 2' CONTOURS
 -  PROPOSED 2' CONTOURS - FINE GRADING AREAS (PONDS)
 -  PROPOSED 1' CONTOURS - FINE GRADING AREAS (PONDS)



U:\USER\0405131\DRAW\INGS\PHASE I\GRAD\ING\UTL1.TMAP.dgn



DATE: 7-20-05

 DRAWN BY:

SITE GRADING, SANITARY SEWER AND WATER LATERALS - PHASE I - 2005 CONSTRUCTION

WOLF HOLLOW

TOWN OF WINDSOR, DANE COUNTY, WISCONSIN



D'ONOFRIO, KOTTKE AND ASSOCIATES, INC.
 7530 WESTWARD WAY
 MADISON, WISCONSIN 53717
 TEL: 608-833-7530
 FAX: 608-833-1099